

NEW PRODUCT INFORMATION

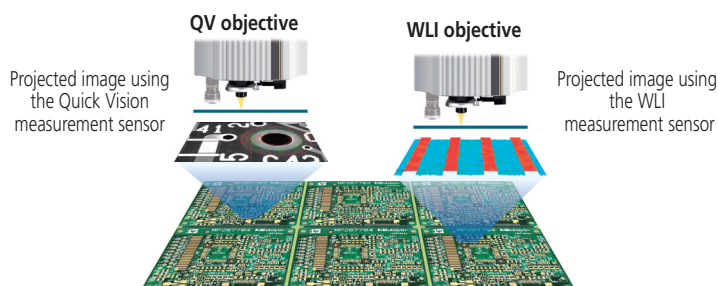
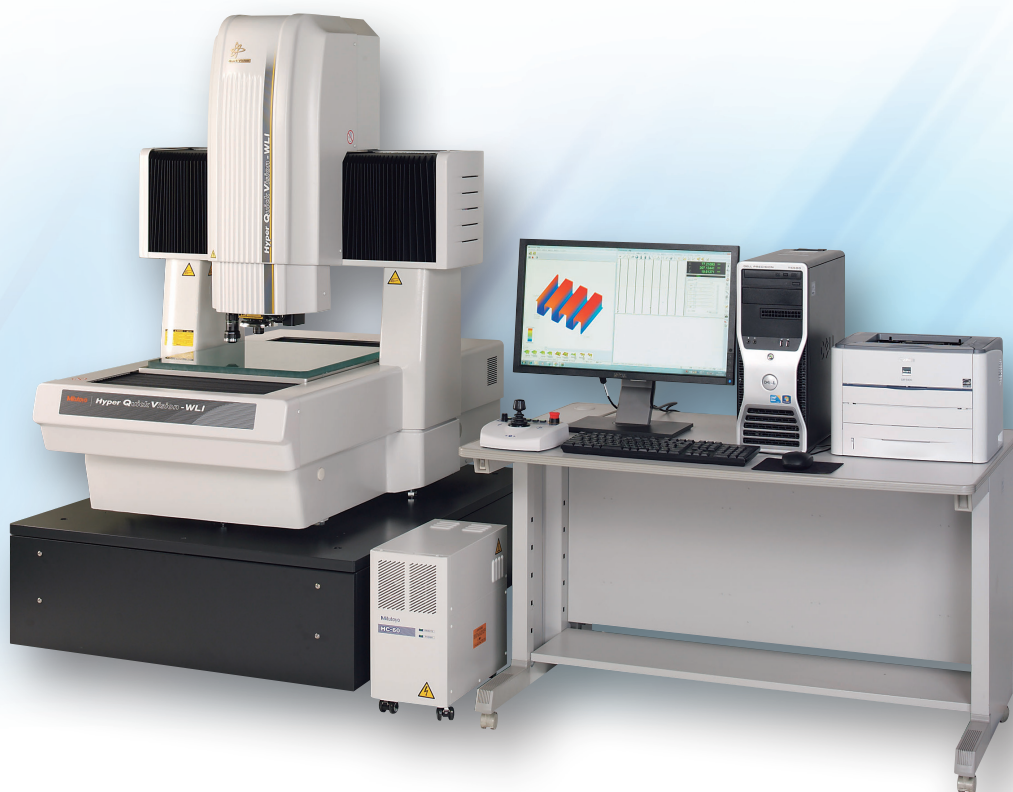
Quick Vision WLI

CNC Video Measuring System with White Light Interferometry



FEATURES

- Both non-contact measurement & minute 3D evaluation in single machine.
- High precision hybrid measurement system with built in WLI (White Light Interferometer) head.
- Large format style, evaluation series with built in vibration isolation stand.

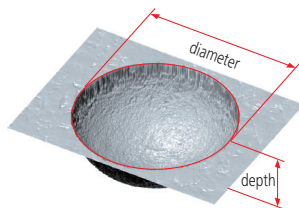


QV WLI 10x objective

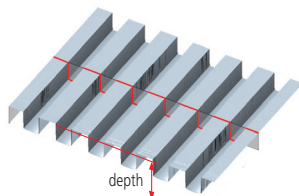
QV WLI 25x objective

SPECIFICATIONS

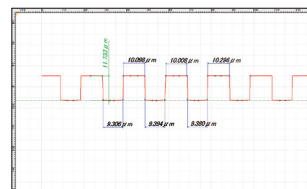
Model		Quick Vision WLI 404	Quick Vision WLI 606
Stroke	Vision Head	16 x 16 x 9.5" (400x400x240mm)	24 x 26 x 9.5" (600x650x240mm)
XxYxZ	WLI Head	12 x 16 x 9.5" (315x400x240mm)	20 x 26 x 9.5" (515x650x240mm)
WLI Head			
Tube Lens		2x	
Field of View (HxV)		10xLen: Approx .013 x .1" (0.32x0.24mm) 25xLen: Approx .005 x .004" (0.128x0.096mm)	
Repeatability		2±0.2µm	
Z-axis measuring range		200µm	
Vision Head			
Magnification change mechanism		PPT 1x-2x-6x	
CCD Camera		B&W	
Illumination Unit	Surface	Color LED	
	Contour	White LED	
	PRL	Color LED	
Measurement	E1 XY axis	(0.8+2L/1000)µm	
Accuracy	E1 Z axis	(1.5+2L/1000)µm	
	E2 XY plane	(1.4+3L/1000)µm	
Main Unit			
Minimum Reading		0.01µm	
Maximum Stage Loading		55 lbs (25kg)	77 lbs (35kg)
Guiding method		Linear motion bearing	
Main Unit Dimension WxDxH		40 x 55 x 70" (1027x1407x1775mm)	52 x 78 x 71" (1309x1985x1797mm)



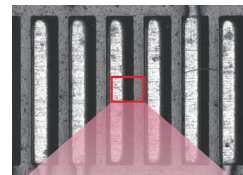
Application view of nano hole



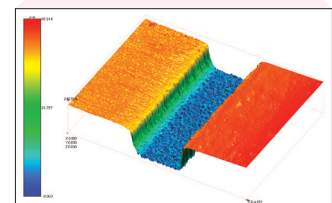
Application view of surface trace



QV - FORMPAK 2D analysis



Region of interest evaluation



3-dimensional topographical result,
data of micro-circuit

Coordinate Measuring Machines

Vision Measuring Systems

Form Measurement

Optical Measuring

Sensor Systems

Test Equipment and
Seismometers

Digital Scale and DRO Systems

Small Tool Instruments and
Data Management

Distributed by:

Note: All information regarding our products, and in particular the illustrations, drawings, dimensional and performance data contained in this printed matter as well as other technical data are to be regarded as approximate average values. We therefore reserve the right to make changes to the corresponding designs. The stated standards, similar technical regulations, descriptions and illustrations of the products were valid at the time of printing. In addition, the latest applicable version of our General Trading Conditions will apply. Only quotations submitted by ourselves may be regarded as definitive.

Mitutoyo products are subject to US Export Administration Regulations (EAR). Re-export or relocation of Mitutoyo products may require prior approval by an appropriate governing authority.

Trademarks and Registrations

Designations used by companies to distinguish their products are often claimed as trademarks. In all instances where Mitutoyo America Corporation is aware of a claim, the product names appear in initial capital or all capital letters. The appropriate companies should be contacted for more complete trademark and registration information.

We reserve the right to change specifications and prices without notice.

Mitutoyo America Corporation

www.mitutoyo.com

One Number to Serve You Better
1-888-MITUTOYO (1-888-648-8869)

M³ Solution Centers

Aurora, Illinois
(Corporate Headquarters)

Westford, Massachusetts

Huntersville, North Carolina

Mason, Ohio

Plymouth, Michigan

City of Industry, California

Birmingham, Alabama

Mitutoyo
Precision is our Profession