

## 15% OFF

# DON'T WAIT TO UPDATE CMM Software Upgrade Promotion

Effective July 1 Though October 1, 2025

CMM SOFTWARE UPGRADE PROMO

**WINDOWS 11  
COMPLIANT**

Operating systems  
supported: Windows®  
11 Pro/Enterprise & 11  
Pro (64-bit)



# CMM Software



## MCOSMOS 5.3 New features and functions:

- Operating systems supported: Windows® 11 Pro/Enterprise & 11 Pro (64-bit)
- Get the latest software without expensive maintenance agreements
- Realize new features including:

**Support up to 8 MCR20** – Module Change Rack for TP20 probe modules.

**OPC UA (Open Platform Communications Unified**

**Architecture) support** – OPC is the interoperability standard for the secure and reliable exchange of data in the industrial automation space and in other industries.

**PH20 head calibration as part program command** – head calibration can now be stored as a learnable part program command.

**ISO 5459 evaluation of position tolerances** – MCOSMOS elements can now be defined as datums for tolerance evaluation as specified in the technical drawing.

**Asymmetric surface profile tolerance support for ISO or ASME evaluation** – asymmetrical tolerance zone differs according to ISO or ASME can now be selected whether evaluation is carried out according to ISO or ASME.

**Parallelism and angularity in the 3D view** – tolerance evaluation for parallelism and angularity of a plane in relation to datum features is visualized with topographic image using the measured points when parallelism or angularity is applied as a tolerance.

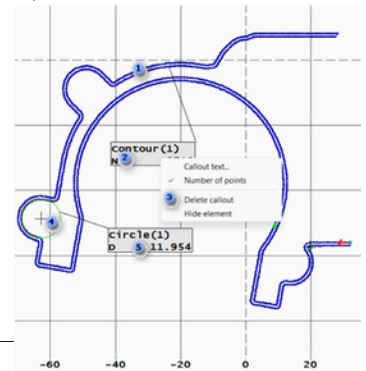
**Updated 2D View in GEOPAK** – all contours and all 2D elements available in the part program are shown in the new updated 2D View. The functions provided in the 2D View make it simple to edit the contours.

**Support of head data columns** – used to add up to 4 head data fields as columns to the part list. Further details of the parts can be displayed in the part list.

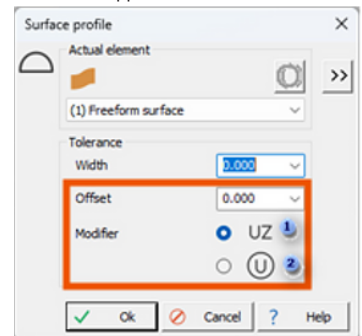
**Supported CAD formats** – updated versions of supported CAD formats.

- 1 Contour
- 2 Contour callout
- 3 Context menu to edit the element and the callout
- 4 Circle calculated by contour points (2D element)
- 5 Circle callout

Updated 2D view in GEOPAK

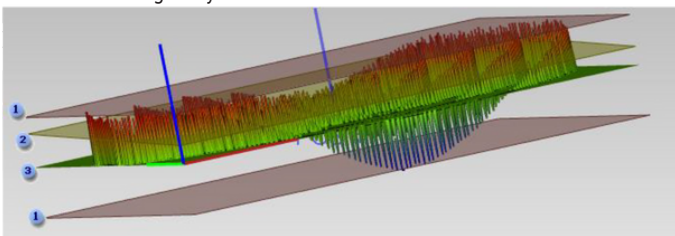


Asymmetric surface profile tolerance support for ISO or ASME



- 1 Evaluation according to ISO 1101: 2017
- 2 Evaluation according to ASME Y14.5: 2018

Parallelism and angularity in the 3D view



Topography and display of false colours

- 1 Tolerance width
- 2 Calculated element
- 3 Actual element

**Mitutoyo**

### Mississauga Location

2121 Meadowdale Blvd.,  
Mississauga, ON L5N 5N1  
Tel. (905) 821-1261  
info@mitutoyo.ca

**EXPERIENCE MITUTOYO  
M3 SOLUTION CENTERS**

### Bureau de Montréal

#129-7075 place Robert-  
Joncas, Montreal, QC H4M 2Z2  
Tel. (514) 337-5994 Ext. 251

Format	Versions
SAT	R1 – 2023 1.0.0.33
NX Direct	NX1 – NX2306 <ul style="list-style-type: none"> <li>• assembly files without PMI</li> <li>• single parts with PMI</li> </ul>
SolidWorks Direct	2003 – 2023 (without PMI) 2014-2023 (with PMI)
Pro/E	16 – Creo 10.0 (geometry & PMI) <ul style="list-style-type: none"> <li>• assembly files without PMI</li> <li>• single parts with PMI</li> </ul>
IGES	5.3 or earlier (geometry only)
Step	AP203, AP214 (without PMI) AP242 (with PMI)
CATIA V4	4.1.9 – 4.2.4 (geometry only)
CATIA V5 / CATIA V6	V5 R15 – V5-6R2023 (geometry & PMI)
Parasolid Direct	9.0.x – 35.0.x (geometry only)
VDA-FS	V1.0 – V2.0 (geometry only)
Inventor	V6 – V2023 (geometry only)
Solid Edge Direct	ST – SE2023 V18 – V20 (geometry only)
JT	10.2, 10.3, 10.5, 10.6 and 10.7 <ul style="list-style-type: none"> <li>• assembly files without PMI</li> <li>• single parts with PMI</li> </ul>